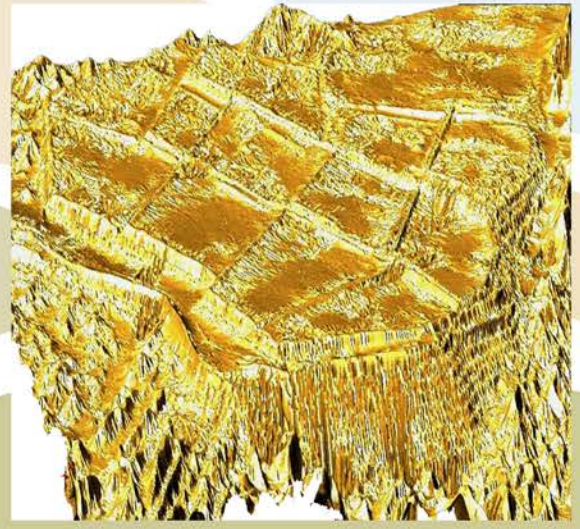
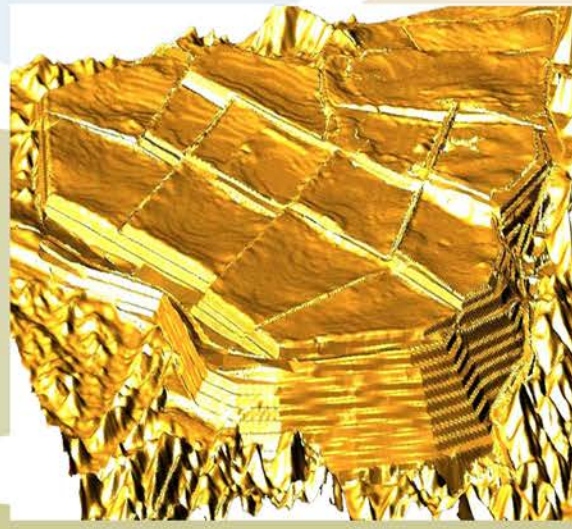
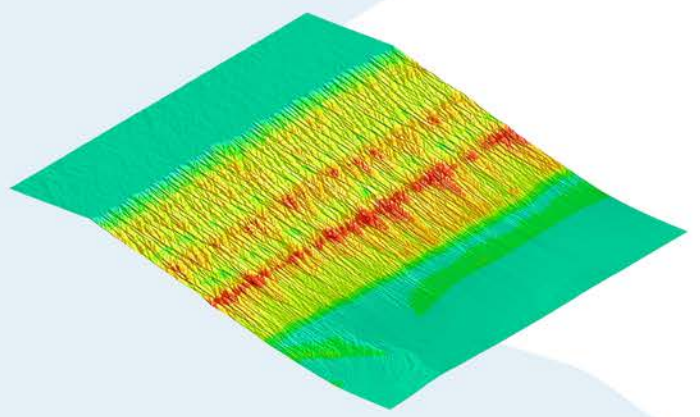
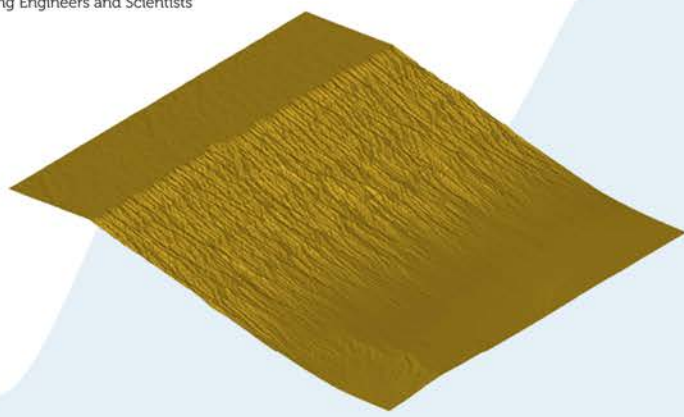


Landform Design





WWL

Water, Waste & Land

Consulting Engineers and Scientists

Landform design

Water, Waste and Land, Consulting Engineers and Scientists (WWL), is a services company specialized in providing solutions for the control of long term erosion of waste landforms. The latest technology is applied with a strong focus on innovation and research. Modifications to existing landforms are developed in AutoCAD 3D and modelled so as to compare erosional performance with the base landform. Erosion assessment tools applied by WWL are:

- SIBERIA
- Carlson Natural Regrade.

The above tools are applied to:

- The design of landform geometry to minimize long term erosion
- The assessment of erosion performance of slopes and slope covers
- The estimation of the long term stability of mine waste and other land forms
- The minimization of closure costs while meeting regulatory requirements on long term safety and stability of TSF & WRD landforms

Contact Us

Gordon McPhail

Director

Suite 14, Corner South St & Calley Dr, Leeming
Perth | Western Australia | Australia | 6149

phone: +61 438 190 722

email: gmcphail@wwlengineering.com

web: <http://www.wwlengineering.com>

Roxana Ugaz

Director

Suite 14, Corner South St & Calley Dr, Leeming
Perth | Western Australia | Australia | 6149

phone: +61 457 604 855

email: rugaz@wwlengineering.com

web: <http://www.wwlengineering.com>